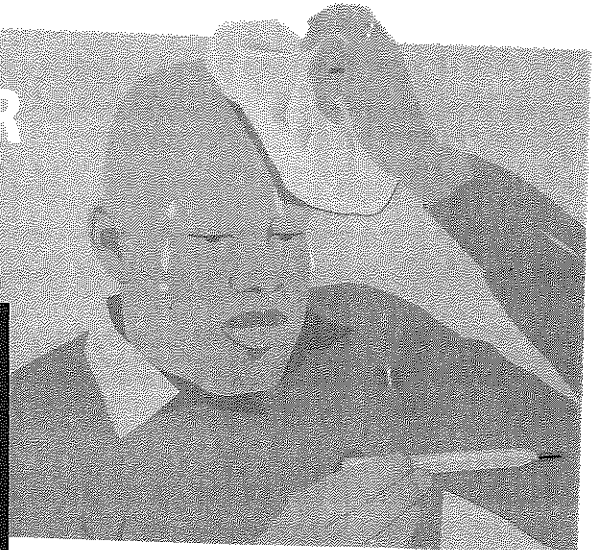


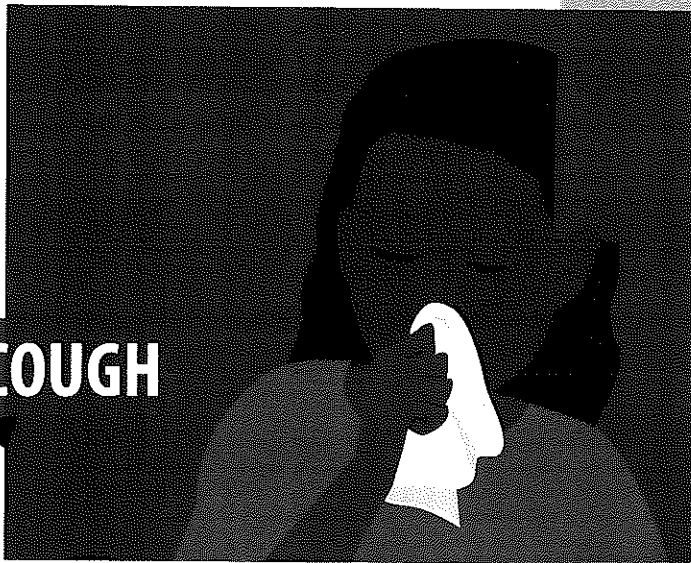
**Patients with COVID-19 have experienced mild to severe respiratory illness.**

**Symptoms\* can include**

**FEVER**



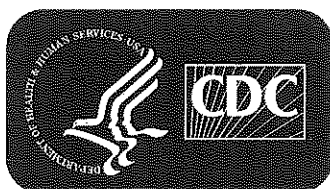
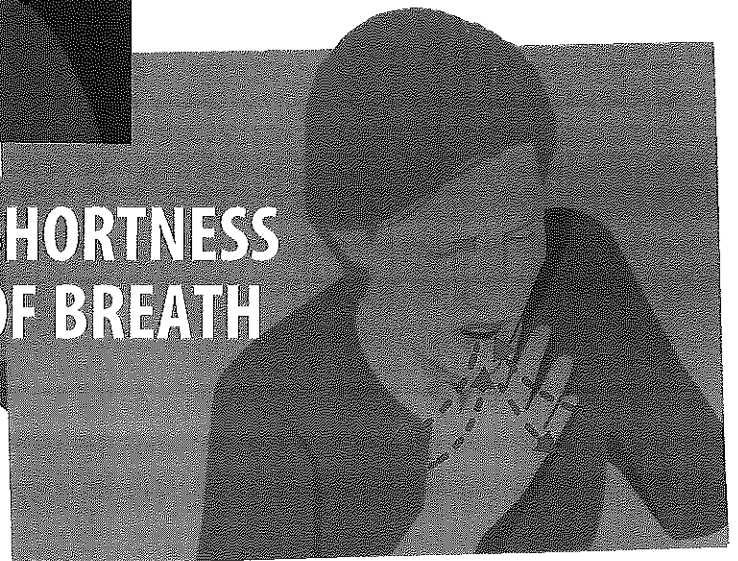
**COUGH**



**\*Symptoms may appear 2-14 days after exposure.**

**Seek medical advice if you develop symptoms, and have been in close contact with a person known to have COVID-19 or if you live in or have recently been in an area with ongoing spread of COVID-19.**

**SHORTNESS OF BREATH**



For more information: [www.cdc.gov/COVID19-symptoms](http://www.cdc.gov/COVID19-symptoms)